
SLPL'S SPELLBINDING PAGES



VOL. I , NO.1



WWW.SOLEHIPL.ORG



SPRING 2026

BUILDING AND CURBSIDE HOURS
MONDAY - THURSDAY 9:30AM - 8PM
FRIDAY 9:30AM - 5PM
SATURDAY 9AM - 4PM

THE LIBRARY WILL BE CLOSED ON
MAY 23RD AND 25TH

**CHECK OUT
OUR WEBSITE CALENDAR
FOR MORE INFORMATION**

BIBLIOTHECA COMMUNITY GROWS!!

**UNEARTH A STORY
IN THE FOLLOWING PAGES**

SLPL'S SPELLBINDING PAGES



VOL. I , NO.1



WWW.SOLEHIPL.ORG



SPRING 2026

BUILDING AND CURBSIDE HOURS
MONDAY - THURSDAY 9:30AM -
8PM FRIDAY 9:30AM - 5PM
SATURDAY 9AM - 4PM

THE LIBRARY WILL BE CLOSED ON
MAY 23RD AND 25TH

**CHECK OUT
OUR WEBSITE CALENDAR
FOR MORE INFORMATION**

BIBLIOTHECA COMMUNITY GROWS!!

A LETTER FROM THE DIRECTOR...

If you believed some of the articles these days, you'd think libraries were going the way of the dinosaur, but that is far from the case in our community. As I finish up our annual report to the Office of Commonwealth Libraries, our statistics back up what we are seeing every day. 1 in 3 Southern Lehigh residents have an active library card, a number that has been inching upward for 13 straight months. I ask how many other community organizations or resources are used regularly by 33% of the population? In 2025, our patrons checked out 103,863 physical items, including books, audiobooks, DVDs, CDs, computer games, board games, learn with me kits, museum passes and hotspots. They also checked out an additional 31,193 electronic books, audios and magazines, and 7,943 children and parents came to the 252 programs organized by our awesome Children's Librarian, Melissa. We also partnered with AARP, Betty Lou's Pantry, the Upper Saucon Lions Club, the Coopersburg Garden Club, and others to bring our community together. In short, we are busier now than we have been in years. I invite everyone to come visit us and see what we can offer you!

EXECUTIVE DIRECTOR, MARK SULLIVAN

BREAKING NEWS



WWW.SOLEHIPL.ORG



YOUTH AND FAMILY PROGRAMS

SPRING 2026

CHILDREN, YOUTH, AND FAMILY PROGRAMMING
REGISTRATION OPENS MARCH 26 TH AT 8:00PM

[HTTPS://WWW.SOLEHIPL.ORG/EVENT-CALENDAR/#/EVENTS/](https://www.solehipl.org/event-calendar/#/events/)

MIXED AGE STORYTIME (SESSION 1):

TUESDAYS APRIL 7TH – MAY 26TH AT 10:00AM

***PLEASE SIGN-UP CHILD/CHILDREN FOR ONLY 1 STORYTIME SESSION**

MIXED AGE STORYTIME (SESSION 2):

TUESDAYS APRIL 7TH – MAY 26TH AT 11:15AM

***PLEASE SIGN-UP CHILD/CHILDREN FOR ONLY 1 STORYTIME SESSION**

BABY STORYTIME: (AGES BIRTH – 24 MONTHS):

FRIDAYS ON APRIL 17TH, MAY 1ST, MAY 15TH, MAY 29TH AT 10:30AM

MISS MELISSA'S AARDVARKS MUSIC CLASS (SESSION 1):

THURSDAYS: APRIL 16TH – MAY 21ST FROM 9:30AM-10:00AM

***PLEASE SIGN UP FOR ONLY 1 MUSIC CLASS SESSION**

MISS MELISSA'S AARDVARKS MUSIC CLASS (SESSION 2):

THURSDAYS: APRIL 16TH – MAY 21ST FROM 10:05AM-10:35AM

***PLEASE SIGN UP FOR ONLY 1 MUSIC CLASS SESSION**

MISS MELISSA'S AARDVARKS MUSIC CLASS (SESSION 3):

THURSDAYS: APRIL 16TH – MAY 21ST FROM 10:45AM-11:15AM

***PLEASE SIGN UP FOR ONLY 1 MUSIC CLASS SESSION**

CONTINUED



BREAKING NEWS



WWW.SOLEHIPL.ORG



YOUTH AND FAMILY PROGRAMS

SPRING 2026

CHILDREN, YOUTH, AND FAMILY PROGRAMMING
REGISTRATION OPENS MARCH 26 TH AT 8:00PM

[HTTPS://WWW.SOLEHIPL.ORG/EVENT-CALENDAR/#/EVENTS/](https://www.solehipl.org/event-calendar/#/events/)

- **DUNGEON AND DRAGONS CLUB:** (FOR NEW AND EXPERIENCED PLAYERS AGES 12+) THURSDAYS APRIL 9TH, MAY 14TH, AND JUNE 11TH FROM 6:00-8:00PM - ADVENTURE LEAGUE AND HOMEBREW ONE-SHOT CAMPAIGNS. TWO TABLES ARE AVAILABLE WITH EXPERIENCED DMS RUNNING THE CAMPAIGNS. DICE AND CHARACTER SHEETS AVAILABLE OR BRING YOUR OWN. D&D APP AND D&D BEYOND WELCOME
- **GAME PLAY:** (AGES 2 – 6 YEARS OLD) FRIDAYS APRIL 10TH AND MAY 8TH AT 10:30AM - GET YOUR BODIES MOVING WITH PLAY/GYM EQUIPMENT.
- **TAIL WAGGING READERS:** SATURDAYS APRIL 11TH AND MAY 9TH AT 11:00AM – COME AND READ TO THERAPY DOGS AT THE LIBRARY. GREAT FOR RELUCTANT READERS.
- **KIDS CHESS CLUB:** (AGES 8 – 17 YEARS OLD): THURSDAYS APRIL 23RD AND MAY 28TH AT 6:30PM – LEARN AND PRACTICE YOUR CHESS SKILLS BY PLAYING WITH PEERS.
- **POKÉMON CARD/TRADING CARD CLUB:** (AGES 6+) - MONDAY, APRIL 27TH AT 4:30PM - COME SHARE YOUR LOVE OF POKÉMON CARD COLLECTING/PLAYING AS WELL AS ALL TYPES OF TRADING CARDS SUCH AS SPORTS TRADING CARDS, MINECRAFT, ETC.
- **KIDS STEAM TIME:**(AGES 6 – 12 YEARS OLD) WEDNESDAY, APRIL 29TH AT 6:30PM - JOIN US FOR AN HOUR OF STEAM STATIONS AND FUN.
- **PJ STORYTIME:** THURSDAY, MAY 7TH AT 6:30PM- COME TO THE LIBRARY IN YOUR PJS FOR SOME STORYTIME FUN.

CONTINUED



BREAKING NEWS



WWW.SOLEHIPL.ORG



YOUTH AND FAMILY PROGRAMS

SPRING 2026

**CHILDREN, YOUTH, AND FAMILY PROGRAMMING
REGISTRATION OPENS MARCH 26 TH AT 8:00PM**

[HTTPS://WWW.SOLEHIPL.ORG/EVENT-CALENDAR/#/EVENTS/](https://www.solehipl.org/event-calendar/#/events/)

FAMILY EVENING MOVIE: WEDNESDAY, MAY 20 TH AT 6:15PM
WATCH UNIVERSAL PICTURES' **SING** ON OUR BIG SCREEN WHILE ENJOYING SNACKS.

PLAY TO LEARN WORKSHOP: A FAMILY PLACE PROGRAM (AGES 12 – 42 MONTHS)
WEDNESDAYS APRIL 22 ND – MAY 20 TH AT 10:30AM – CAREGIVERS AND CHILDREN INTERACT
WITH AGE-APPROPRIATE EDUCATIONAL TOYS IN A RELAXED AND SAFE ENVIRONMENT WITH THE
OPPORTUNITY TO SPEAK INDIVIDUALLY WITH EARLY CHILDHOOD SPECIALISTS ON A VARIETY OF
CHILD DEVELOPMENT TOPICS. THIS IS A 5-WEEK WORKSHOP FOR BOTH CAREGIVERS AND
CHILDREN. CAREGIVERS/CHILDREN MUST COMMIT TO 4 OF THE 5 SESSIONS TO ATTEND.
*SIBLINGS ARE WELCOME TO ATTEND.

EINSTEIN ROCKS PRESCHOOL SCIENCE PROGRAM: (AGES 3-6) FRIDAY, MAY 22 ND AT
10:30AM. PRESCHOOL SCIENCE FUN ALL ABOUT GRAVITY. COME LEARN ABOUT THE SCIENCE OF
GRAVITY WITH DIFFERENT EXPERIMENTS AND PROJECTS.

*CHILDREN'S PROGRAMMING IS FUNDED BY DONATIONS RECEIVED FROM RESIDENTS TO THE
LIBRARY'S HELPING HANDS CAMPAIGN.
WE THANK YOU FOR YOUR GENEROSITY AND

SUPPORT!

CONTINUED



BREAKING NEWS



WWW.SOLEHIPL.ORG



YOUTH AND FAMILY PROGRAMS

REGISTRATION FOR LIBRARY PROGRAMS WILL NOW BE DONE USING OUR
WEBSITE CALENDAR.

[HTTPS://WWW.SOLEHIPL.ORG/EVENT-CALENDAR/#/EVENTS/](https://www.solehipl.org/event-calendar/#/events/)

SIMPLY CLICK THE “REGISTER” ICON FOR THE EVENT YOU WOULD LIKE
TO SIGN UP.

YOU ONLY NEED TO REGISTER THE PARTICIPANT/CHILD.
REGISTRATION REQUIRES A LIBRARY CARD NUMBER.

EACH CHILD IS REQUIRED TO HAVE THEIR OWN LIBRARY CARD TO
ATTEND PROGRAMMING.

ASK AT THE CIRCULATION DESK ABOUT THE
“MY FIRST LIBRARY CARD” PROGRAM, OR SIGN UP ONLINE FOR

A LIBRARY CARD AT

[HTTPS://SOLEHIPL.SPARKPA.ORG/EG/OPAC/REGISTER](https://solehipl.sparkpa.org/eg/opac/register)

SCAN QR CODE TO GO DIRECTLY TO OUR EVENTS CALENDAR TO
REGISTER FOR PROGRAMMING



BREAKING NEWS



WWW.SOLEHIPL.ORG



CHARACTER QUEST

Find Your Favorite Storybook Characters
Throughout the Library!

Monday, April 20-Saturday, April 25th



These characters will be hiding in the library.
When you find them all, bring your check-off
list to the front desk and you can pick a
free book from the character quest
shelves.

BREAKING NEWS



WWW.SOLEHIPL.ORG



ADULT PROGRAMS

SLPL PRESENTS



Practical Application of “The Golden Section and Other Systems of Dynamic Composition”

By Charlie Daniels

In the first of two classes, you will use techniques to compose your own art work. No math is needed. An overlay and a table of appropriate angles will be provided as well as a demonstration, using the tools required (see list below), will help guide you.

In the second class, students will use a drawing of their choosing and use the techniques learned here to create a well composed piece of art.

List of necessary tools: One small drawing board, pencils, a small tee square, an adjustable triangle, and tracing paper.

Tuesday, March 10 6:00-7:30 PM

Tuesday, March 24 6:00-7:30 PM

Adults over 18 only

Reservation Required



BREAKING NEWS



WWW.SOLEHIPL.ORG



ADULT PROGRAMS



SLPL's free seed library is back!



We have vegetable, herb,
and flower seeds.

Stop by and pick some up
for your garden starting
Monday, March 9th, 2026

Thank you to our amazing donors -
Madle's Hardware and
Burpee Seed Company!



BREAKING NEWS



WWW.SOLEHIPL.ORG



ADULT PROGRAMS



Anything Goes Art Show

Southern Lehigh Public Library
March, 30th - May 22nd 2026

Non-juried

Ages 16 and up



Let your imaginations run wild,
have fun, create something
“out of your comfort zone.”
Photography and 2D art work will be
accepted. The work may be
abstract, impressionistic, or realistic.

Artwork accepted on a first-come, first-served basis
Pieces should be securely wired and braced for hanging.
No clips or fast frames.
Should not exceed 30 inches in width including the frame.
If placed on sale, library requests 15 percent commission.

Delivery: March 28th, 1:30 - 3:30pm **Pick-up:** Monday, May 25th

BREAKING NEWS



WWW.SOLEHIPL.ORG



ADULT PROGRAMS



Southern Lehigh Public Library

Monday, April 6th
1:00 pm - 7:00 pm

To schedule an appointment,
Follow this link or Scan QR code

https://donor.giveapint.org/donor/schedules/drive_schedule/90144



APPOINTMENTS ENCOURAGED

Walk ins welcome but there could be a short wait without an appointment.

All donors must present valid ID with:

- First & Last Name
- Photo &/or Signature

Veterans, ask your coordinator about our complimentary MKBC Military Challenge Coin.



Before you donate, remember to drink plenty of fluids & eat within 2-3 hours of donation.

GIVEaPINT.org | 800-B-A-DONOR |

BREAKING NEWS



WWW.SOLEHIPL.ORG



ADULT PROGRAMS

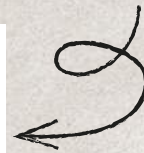
HERE IS OUR ON-GOING PROGRAMS FOR...
CRAFT NIGHT AND TRIVIA NIGHT



- MONDAY, APRIL 13TH SPRING FLOWER CRAFT 6-7:30PM
- MONDAY, APRIL 20TH ADULT TRIVIA NIGHT 6-7:30PM
- MONDAY, MAY 11TH BOOKPAGES ROSES CRAFT 6-7:30PM
- MONDAY, MAY 18TH ADULT TRIVIA NIGHT 6-7:30PM



REGISTRATION REQUIRED
SCAN WITH YOUR PHONE AND OPEN LINK



BREAKING NEWS



WWW.SOLEHIPL.ORG



EVENINGS WITH FRIENDS

Evenings with Friends Presents...

Rosie the Riveter

Presented by David Nowack from the L.V. Historical Society

Wednesday, March 11, 7:00-8:00PM



Rosie the Riveter, the iconic symbol of WWII women war workers, was created to attract much needed war time factory workers. A relatively untapped resource – women – responded patriotically. And they proved that they could do the jobs as well or better than men.

Registration required.

\$10 per person / \$8 Friends member / Payment upon registration

Call (610-282-8825) or stop by the front desk.



BREAKING NEWS



WWW.SOLEHIPL.ORG



EVENINGS WITH FRIENDS

Evenings with Friends Presents...

Queen Elizabeth II

Presented by character actor Alisa Dupuy

Wednesday, April 8, 7:00-8:00PM



Meet her Majesty, Queen Elizabeth II. The Queen will regale us with stories from her youth, appearing as she was in 1977, the time of her Silver Jubilee. The Queen will give her speech, do a walkabout and be available for questions and pictures afterwards. Hats are encouraged!

Registration required.

\$10 per person / \$8 Friends member / Payment on registration

Call (610-282-8825) or stop by the front desk.



BREAKING NEWS



WWW.SOLEHIPL.ORG



EVENINGS WITH FRIENDS

AN EVENING OF IRISH MUSIC

PRESENTED BY

KEN PURCELL AND JACK LAUBACH

MAY 13, 2026, 7 -8PM

**AN EVENING OF IRISH MUSIC PRESENTED BY KEN
PURCELL AND JACK LAUBACH**

**“THE JOLLY ROVING TARS” WILL PRESENT AN
ENGAGING EVENING OF HISTORICAL MUSIC
EMBRACING THE MUSICAL TRADITION OF IRISH
SAILORS AND IMMIGRANTS REplete WITH
CHANTEYS, ROUSING PUB NUMBERS, BALLADS AND
SONGS OF THE INDUSTRIAL RESVOLUTION.**



BREAKING NEWS



WWW.SOLEHIPL.ORG



BOOK SALE ROOM

MARCH

- WOMEN IN HISTORY
- ALL THINGS IRISH
- CHARACTER BOOKS
- EASTER AND ARM CHAIR TRAVEL PUZZLES

APRIL

- CELEBRATING LIBRARY WEEK
- SPRING PUZZLES

MAY

- MOTHER'S DAY
- GRADUATION
- FLORA AND FAUNA PUZZLES
- ANNUAL "3BS" SALE



FOR THE "3BS" SALE

PLEASE SIGN UP AT FRONT DESK IF YOU ARE DONATING BAKED GOODS, PLANTS OR GARDENING GADGETS. PLEASE IDENTIFY BAKED GOODS AND PLANTS WITH INDEX CARD INFO.



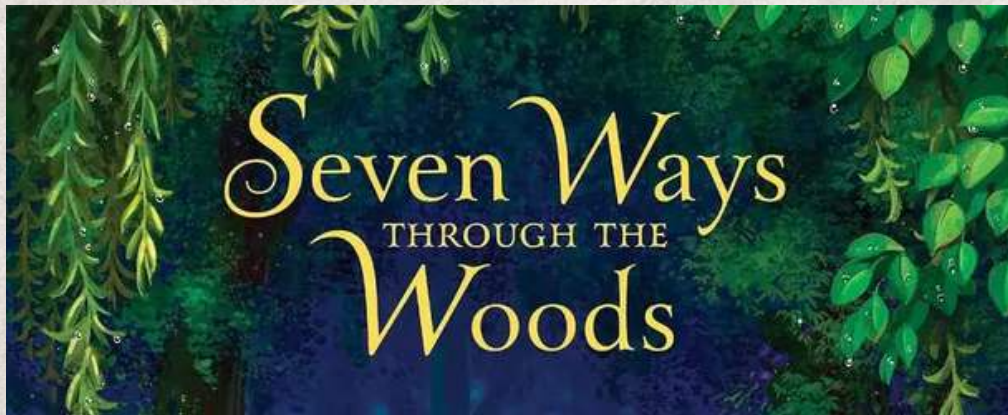
BREAKING NEWS



WWW.SOLEHIPL.ORG



BOOK REVIEWS



**SEVEN WAYS THROUGH THE WOODS -
JENN REESE & DEVIN ELLE KURTZ
EASY PICTURE BOOK**

ADVENTURERS OF ALL AGES WILL LOVE THIS GORGEOUS HOMAGE TO QUESTING. PREMISE: YOU NEED TO GET THROUGH THE WOODS TO THE OTHER SIDE. THE WOODS LOOK DARK AND FOREBODING AND GLOOMY AND INTERESTING AND POSSIBLY DANGEROUS. WHAT'S YOUR PLAN? LISTEN TO CONVENTIONAL WISDOM AND STICK TO THE PATH? THAT COULD WORK. BUT SO COULD THE 6 OTHER SUGGESTED WAYS, IF YOU'RE BRAVE ENOUGH TO TAKE THEM. OR MAYBE YOU COULD EVEN MAKE UP A NEW WAY! ADULTS WILL LOVE THE ALLEGORICAL DEPICTION OF STEPPING TOWARDS OPPORTUNITY AND EMBRACING THE SITUATION YOU FIND YOURSELF IN. KIDS WILL BE SWEEPED AWAY BY THE INTENSELY BEAUTIFUL AND IMAGINATIVE ILLUSTRATIONS, JOYFULLY FOLLOWING LIGHT TOWARDS A NEW ADVENTURE!

BREAKING NEWS



WWW.SOLEHIPL.ORG



FREAKIER FRIDAY DVD

FRIDAY THE 13TH AIN'T GOT NOTHING ON THE DAY TESS AND HER DAUGHTER ANNA ARE HAVING. AFTER A BIZARRE EVENT IN THEIR EARLIER LIVES WHERE THEY MYSTERIOUSLY SWITCHED BODIES, THEY THOUGHT THAT SORT OF NONSENSE WAS LONG GONE. ADULT ANNA IS ENGAGED AND SOON TO MARRY...A MARRIAGE THAT WILL BRING HER A NEW STEP-DAUGHTER. WHO JUST HAPPENS TO BE THE SAME AGE AS HER OWN DAUGHTER. WHO BOTH JUST HAPPEN TO LOATHE EACH OTHER. WHEN COMMANDED TO START "ACTING LIKE A FAMILY", THE GIRLS RESIST...AND OVERNIGHT ANOTHER BODY SWAP OCCURS. THIS TIME, ANNA HAS SWITCHED BODIES WITH HER DAUGHTER, AND TESS (GRANDMA) HAS SWITCHED WITH HER SOON-TO-BE STEP-GRANDDAUGHTER. HILARITY ENSUES, INVOLVING OLD CRUSHES, RECORD STORES, ROOFTOP ENGAGEMENT PARTIES, ROCK CONCERTS AND MORE, AND ALL FOUR MUST WORK HARD TO MAKE THINGS RIGHT AND GET BACK (LITERALLY) INTO THEMSELVES. THEY SAY WALK A MILE IN SOMEONE ELSE'S SHOES...BUT WHAT IF THEY'RE YOUR GRANDMA'S ORTHOPEDIC SNEAKERS? CRINGE.

BREAKING NEWS



WWW.SOLEHIPL.ORG



WELCOME TO OUR SMALLEST FRIEND.
MEET BOGI THE BOG TURTLE.
YOU MAY SEE HIM IN THE LIBRARY, BUT HE IS
SHY AND LOVES SUNLIGHT. SOME OF HIS
FAVORITE BOOKS ARE

TURTLE WALK
BY MATT PHELAN
E-PHE

TIMOTHY, OR NOTES
OF AN ABJECT
REPTILE
BY VERLYN
KLINKENBORG
FIC KLI



BREAKING NEWS



WWW.SOLEHIPL.ORG



IN THE LOOP...

SLPL HAS A DATABASE ON OUR WEBSITE THAT NEEDS A LITTLE SHARING.

KANOPI IS A FREE, ON-DEMAND VIDEO STREAMING SERVICE FOR LIBRARY PATRONS AND UNIVERSITY STUDENTS, OFFERING OVER 30,000 FILMS, INCLUDING DOCUMENTARIES, INDIE, AND WORLD CINEMA. ACCESSIBLE VIA LIBRARY CARDS, IT PROVIDES AD-FREE, EDUCATIONAL, AND ENTERTAINMENT CONTENT. USERS TYPICALLY HAVE MONTHLY, TICKET-BASED VIEWING LIMITS.

kanopy

Films that matter

BIRDIE
THE WORD NERD BIRD
WORD OF THE SEASON...

RESONANCE-
THE QUALITY IN A SOUND OF BEING
DEEP, FULL, AND REVERBERATING.

